
Contents

Contents	I
Preface	1
Installing CH340 Driver on Windows.....	1
Check the Installation	1
Installing Driver	2
Installing CH340 Driver on MAC	9

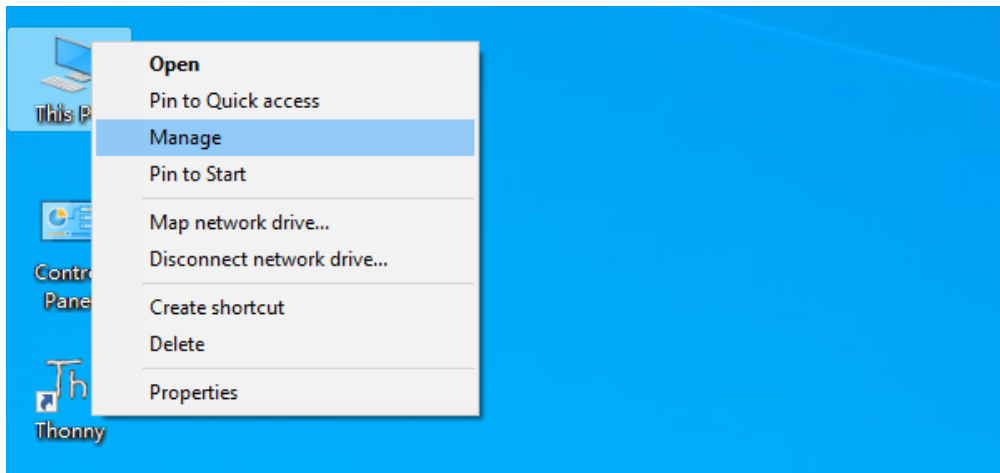
Preface

Most computers have built-in or can install this driver automatically when you first connect the control board. If your computer cannot recognize the control board, follow this document to install the driver.

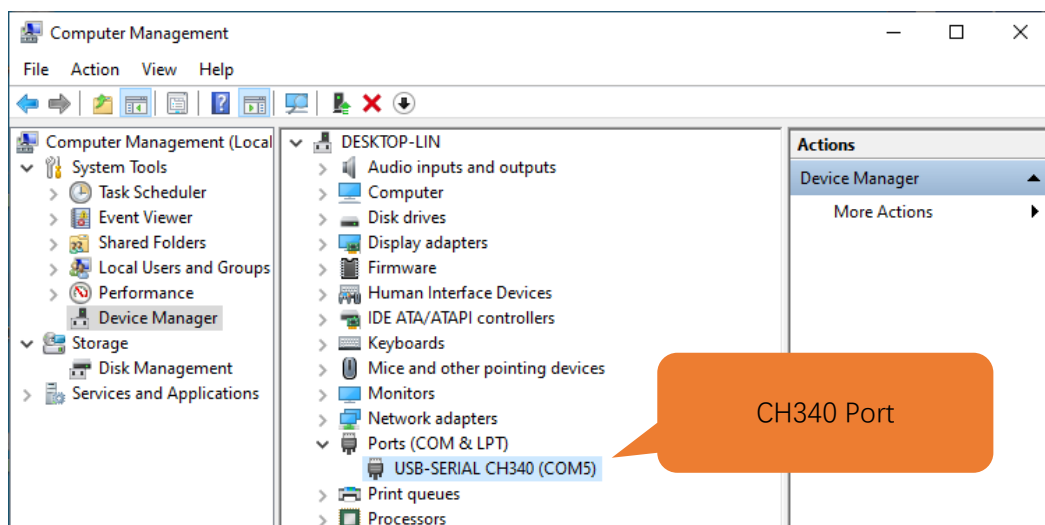
Installing CH340 Driver on Windows

Check the Installation

1. Connect your computer and control board with a USB cable.
2. Go to desktop of your computer, select "This PC" and right-click to select "Manage".



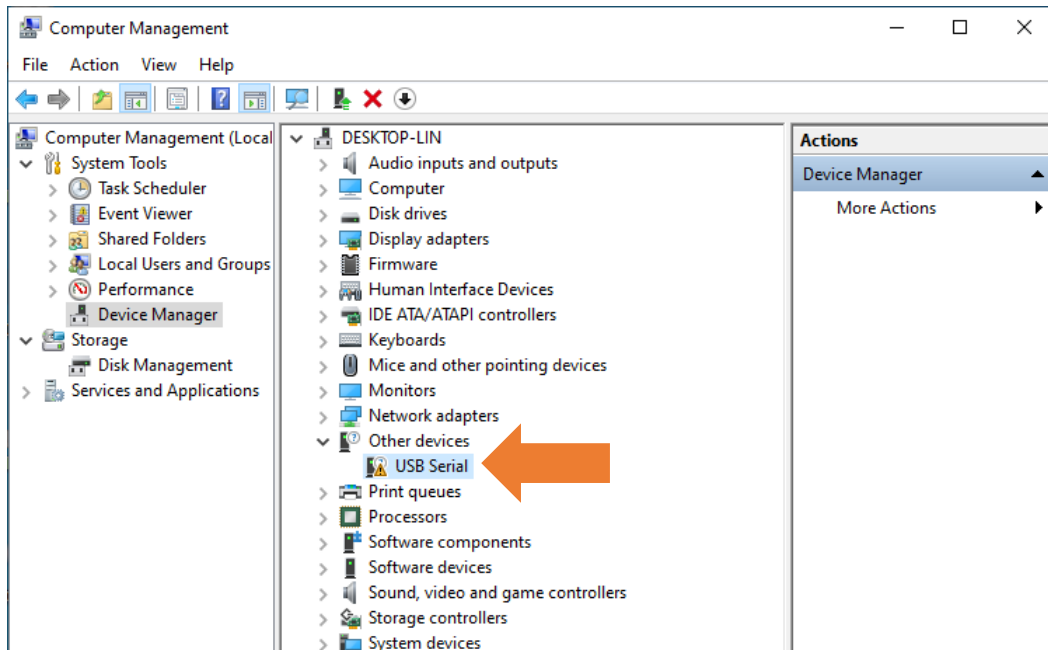
3. Click "Device Manager". If your computer has installed CH340, you can see "USB-SERIAL CH340 (COMx)". Then there is no need to install it again.



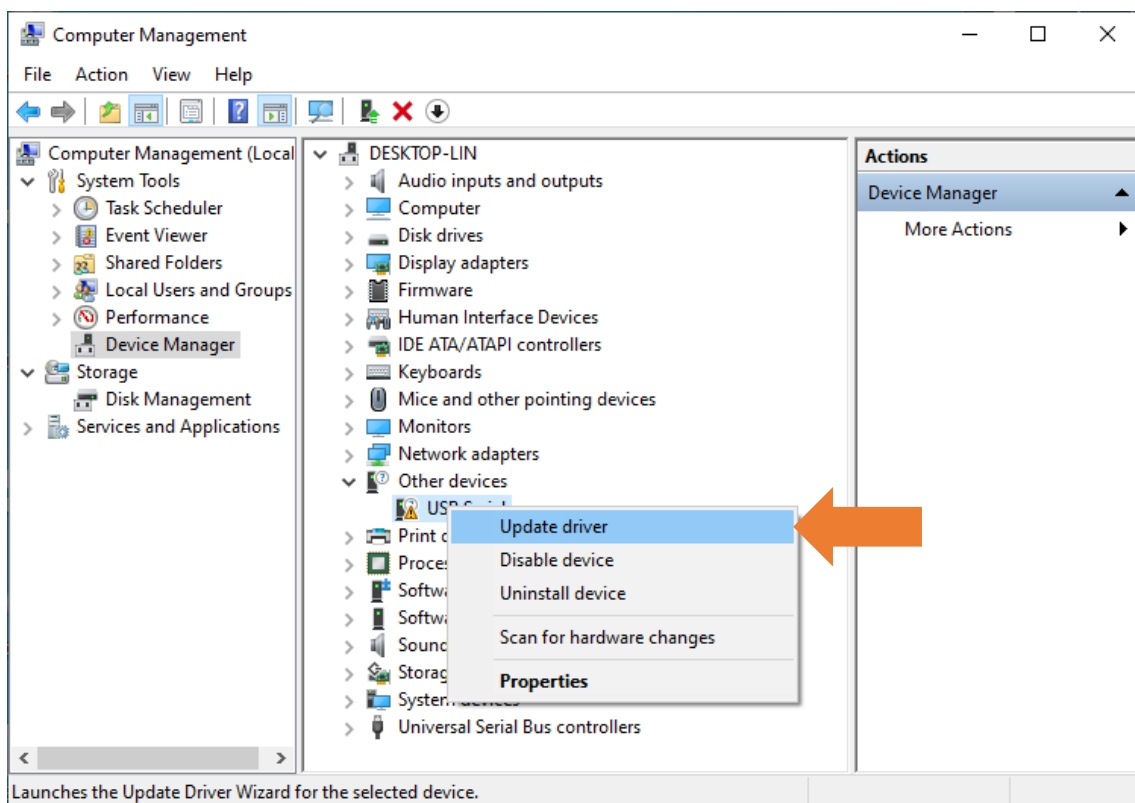
Installing Driver

Method 1

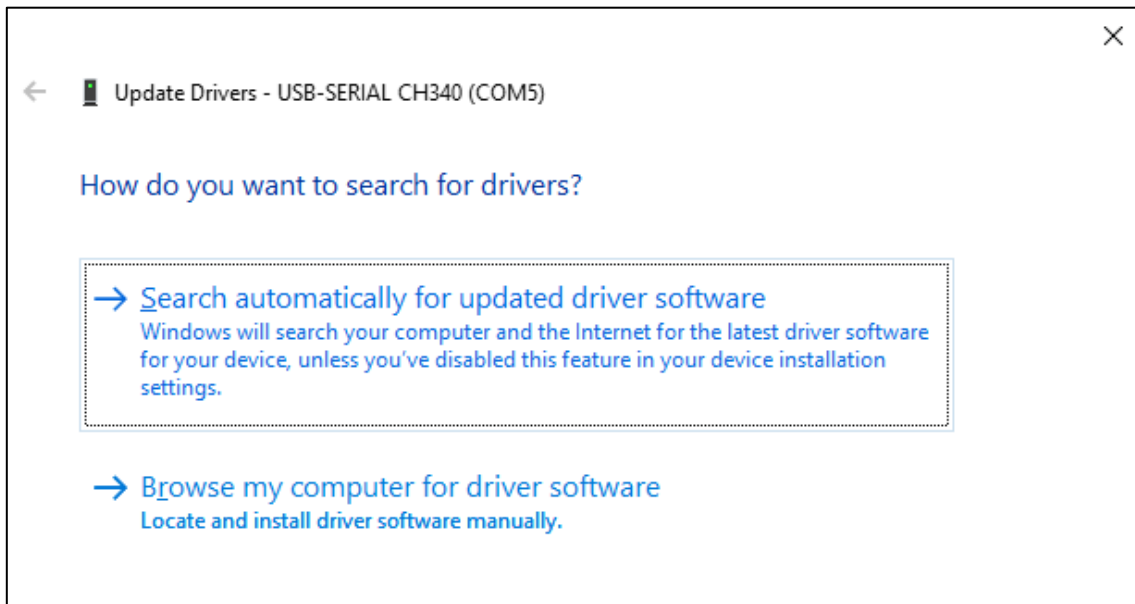
1. If you have not yet installed CH340 driver, you will see the following.



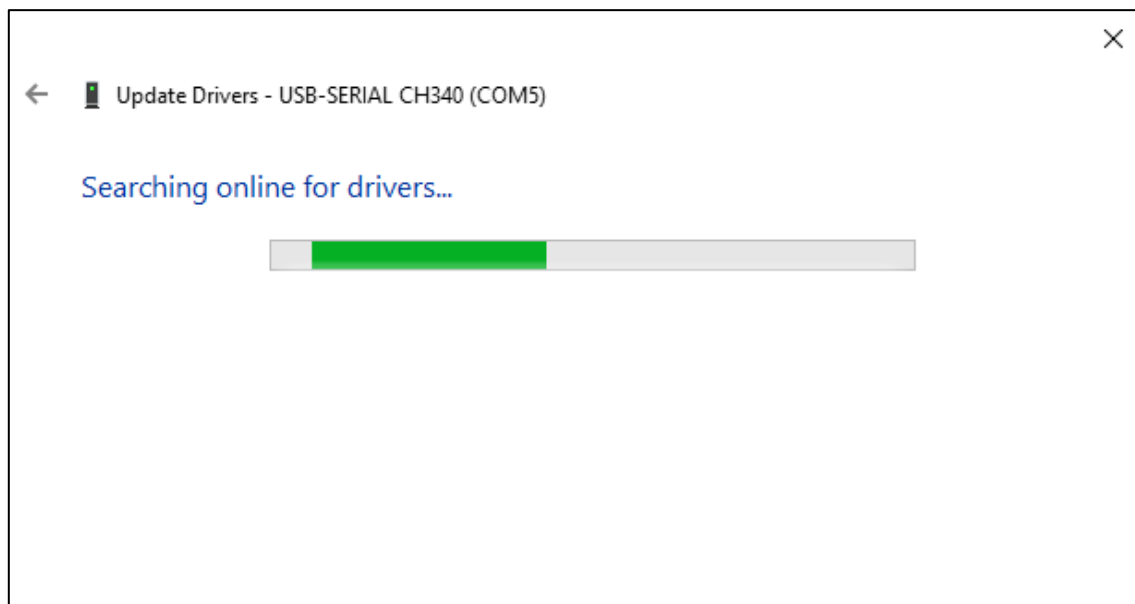
2. Click "USB Serial" and right-click to select "Update driver".



- Click "Search automatically for updated driver software".



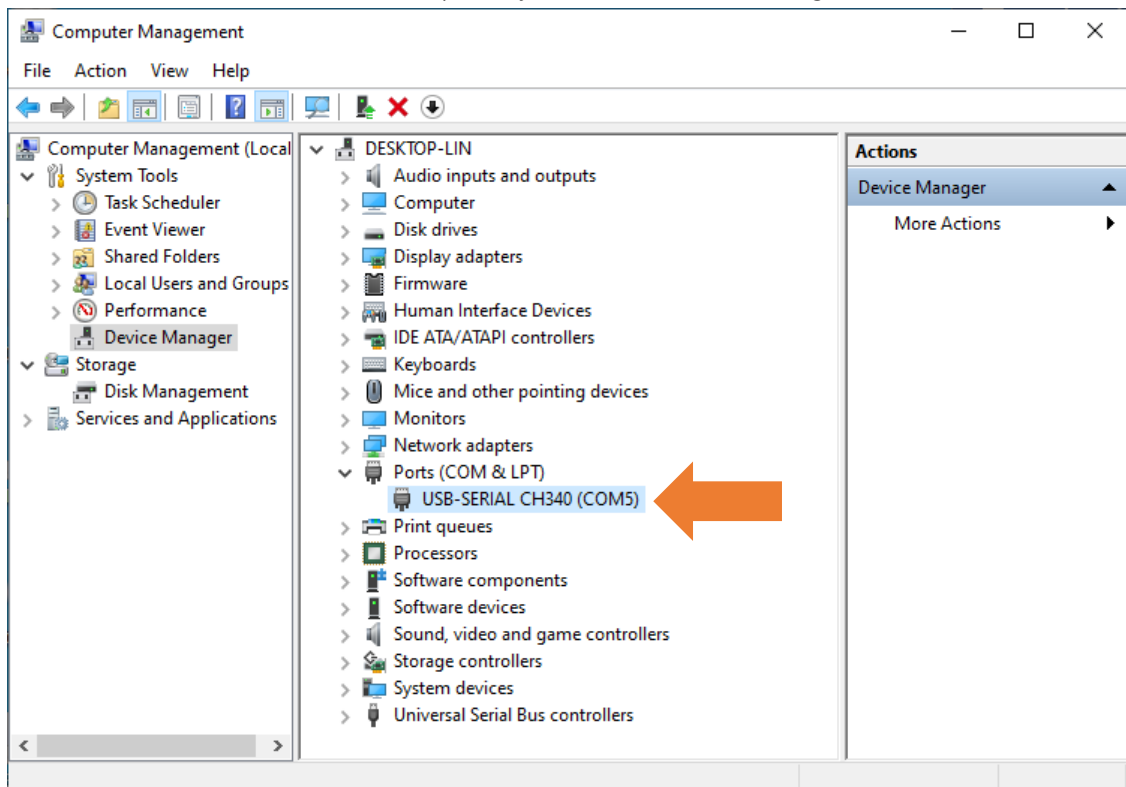
- Wait for CH340 to finish installation.



5. When you see the following interface, it indicates that CH340 driver has been installed to your computer. You can close the window.



6. When control board is connected to computer, you can see the following.



Method 2

1. First, download CH340 driver, click <http://www.wch-ic.com/search?q=CH340&t=downloads> to download the appropriate one based on your operating system.

index / search / search CH340

All (14)

Downloads (7)

Products (4)

Application (2)

Video (1)

News (0)

keyword CH340

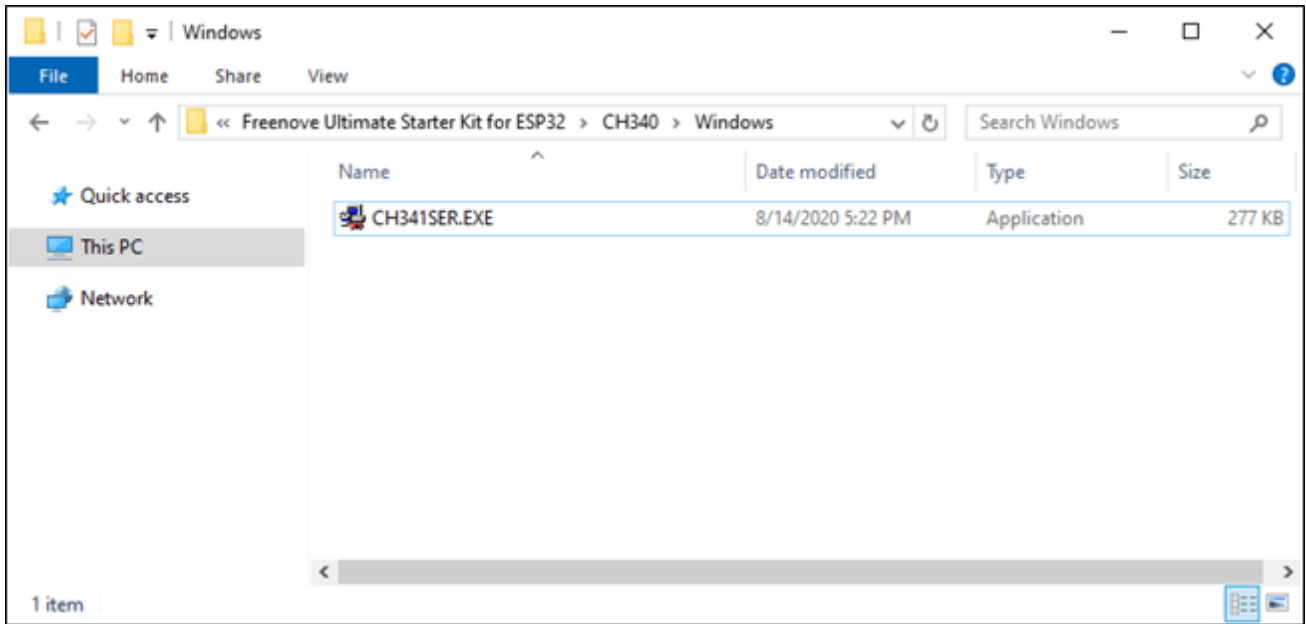
Downloads(7)

file category	file content	version	upload time
Driver&Tools			
CH341SER.EXE	CH340/CH341 USB to serial port Windows driver, supports 32/64-bit Windows 10/8.1/8/7/VISTA/XP, Server 2016/2012/2008/2003, 2000/ME/98	3.5	2019-03-18
CH341SER.ZIP	CH340/CH341 USB to serial port Windows driver, includes DLL dynamic library and non-standard baud rate settings and other instructions. Supports 32/64-bit Windows 10/8.1/8/7/VISTA/XP, Server 2016/2012/2008/2003, 2000/ME/98	3.5	2019-03-05
CH341SER_ANDROID...	CH340/CH341 USB to serial port Android free drive application library, for Android OS 3.1 and above version which supports USB Host mode already, no need to load Android kernel driver, no root privileges. Contains apk, lib library files (Host Driver), App Demo Example (USB to UART Demo)	1.6	2019-04-19
CH341SER_LINUX...	CH340/CH341 USB to serial port LINUX driver	1.5	2018-03-18
CH341SER_MAC.ZI...	CH340/CH341 USB to serial port MAC OS driver	1.5	2018-07-05
Others			
PRODUCT_GUIDE.P...	Electronic selection of product selection manual, please refer to related product technical manual for more technical information.	1.4	2018-12-29
InstallNoteOn64...	Instructions for the driver after 18 years of August cannot be installed under some 64-bit WIN7 (English)	1.0	2019-01-10

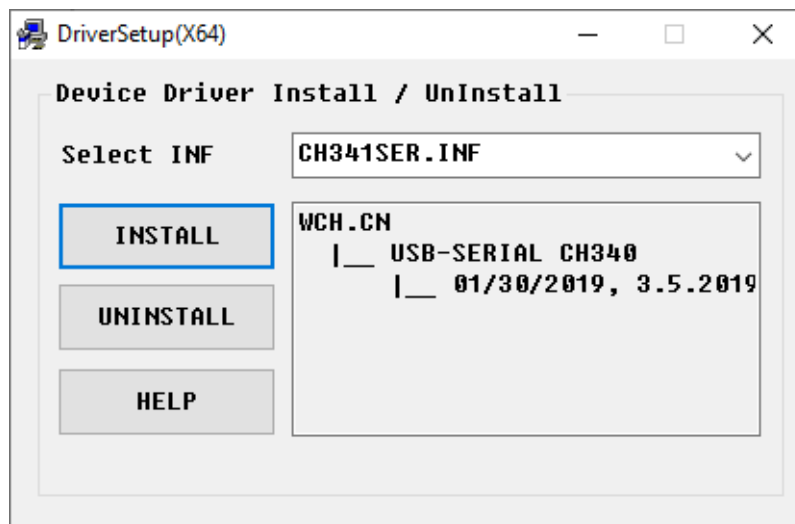
You can also find the installation package in "Drivers" folder.

Name	Date modified	Type	Size
Linux	8/14/2020 5:24 PM	File folder	
MAC	8/14/2020 5:23 PM	File folder	
Windows	8/14/2020 5:23 PM	File folder	

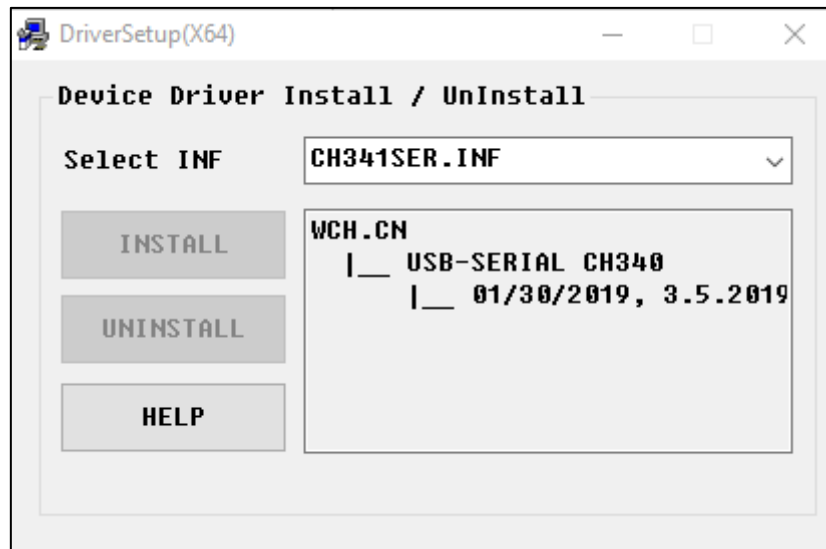
2. Open the folder "Windows".



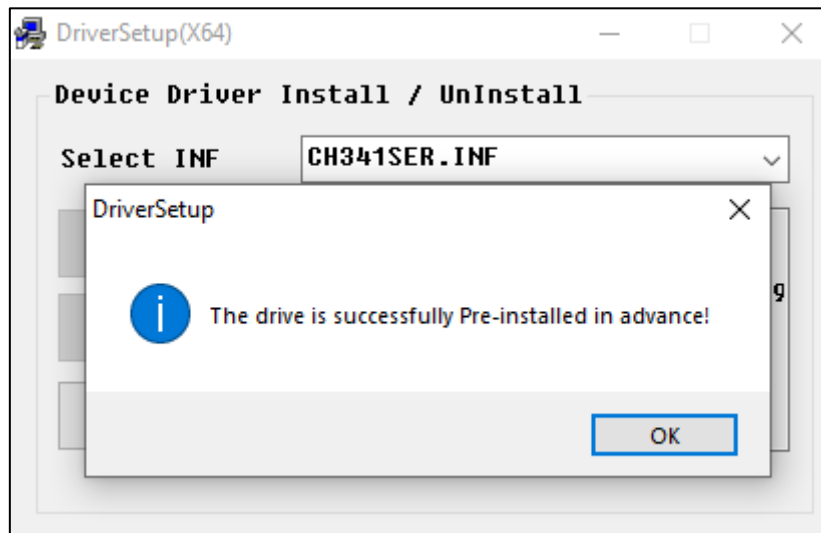
3. Double click "CH341SER.EXE".



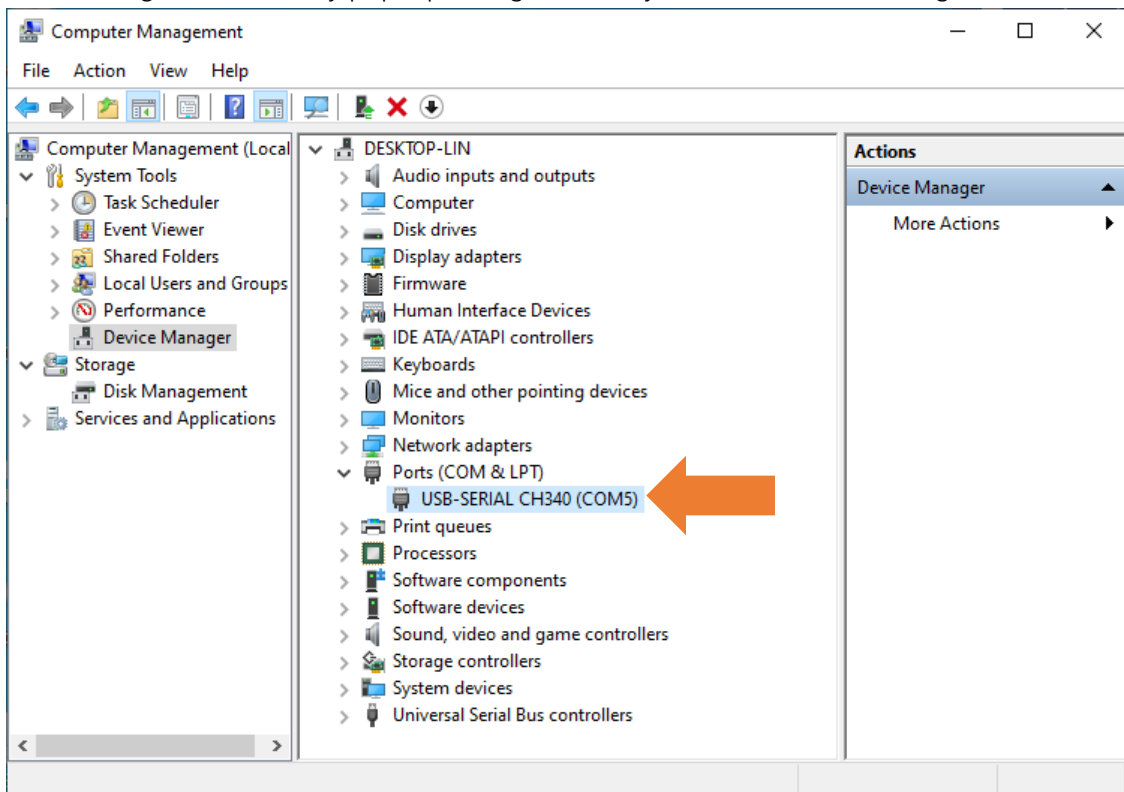
- Click "INSTALL" and wait for the installation to complete.



- Install successfully. Close all windows.



6. When control board is connected to computer, select "This PC", right-click to select "Manage" and click "Device Manager" in the newly pop-up dialog box, and you can see the following.



7. So far, CH340 driver has been installed successfully. Close all dialog boxes.

Please try to upload a sketch again. If the issue remains, please contact us via support@freenove.com

Installing CH340 Driver on MAC

Please refer to **Drivers\MAC\CH341SER_MAC\ReadMe.pdf**

Please try to upload a sketch again. If the issue remains, please contact us via support@freenove.com